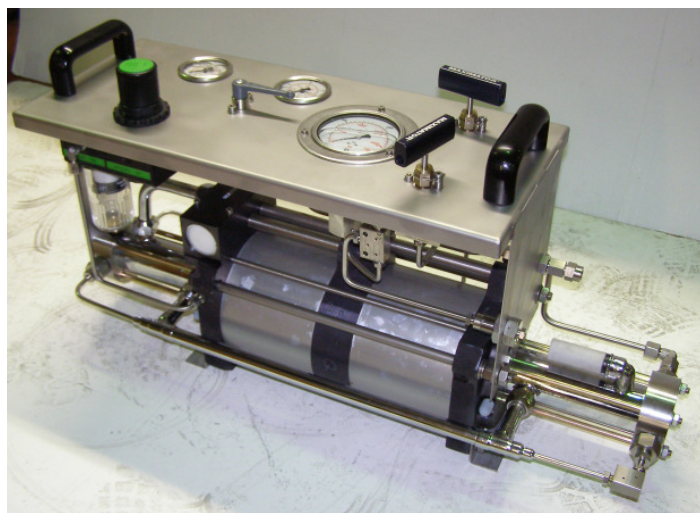


## MAXIMATOR Gas Packs Type GS

The MAXIMATOR High Pressure Test Pack type “GM” are compact booster systems, suitable to compress different kind of gases. The high-quality manufacturing as well as the high grade stainless steel components ensure highest durability and process reliability. The panel mounted instruments ensures safe and easy operation and process control.

The pressure generating unit and all high pressure components are MAXIMATOR brand – proved for the highest quality.



Basis Station consisting of :

Stainless steel panel, including panel mounted control and operating elements,

Air control unit, consisting of pressure gauge , shut-off valve and combined filter pressure regulator,

Working pressure gauge (diameter 100 mm), liquid damped, accuracy 1.0, dual scale bar / psi,

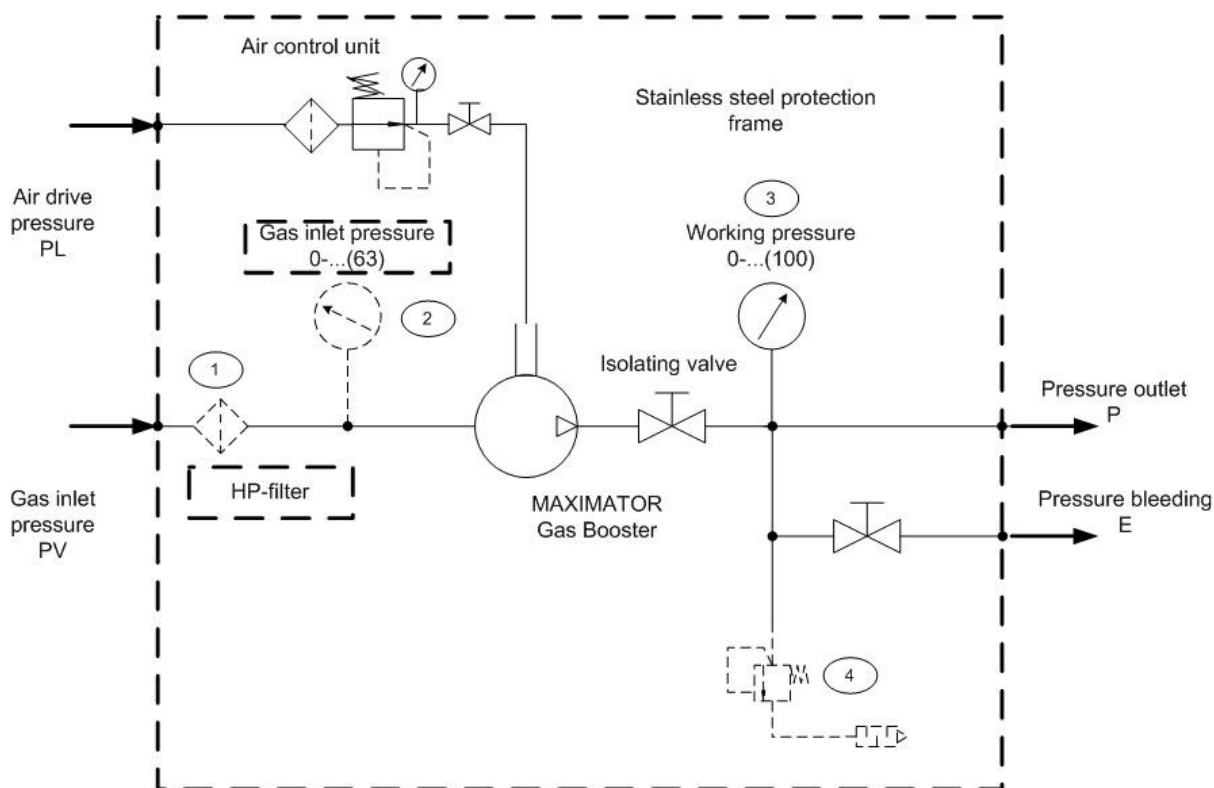
Manual pressure bleed valve type EVH,

Pressure outlet incl. shut-off valve type AV1,

Technical specification			
Pressure range:	0 – 1.500 bar	Height:	420 mm
Connection:	Depending on booster	Width:	800 mm
Weight	20 - 40 kg	Depth:	260 mm

- Available options are:
- Gas inlet filter (1)
  - Gas inlet pressure gauge (ø 63 mm) (2)
  - Pneumatic remote control (Start / Stop)
  - Electric remote control (Start / Stop)
  - DKD calibration certificate for high pressure gauge (3)
  - High pressure safety relief valve (up to 600 bar) (4)
  - High pressure safety relief valve (up to 1.500 bar) (4)
  - Oxygen cleaning
  - Leakage piping for hazardous gas application

Functional diagram:



Remarks: Availability of options depends on type of gas