

MAXIMATOR Power Packs Type LL

The MAXIMATOR High Pressure Test Pack type “LL” are mobile pump units, suitable for oil, water and chemical service. The high-quality manufacturing as well as the high grade stainless steel components ensure highest durability and process reliability. The panel mounted instruments and the ergonomically design ensures easy operation and process control.

The pressure generating unit and all high pressure components are MAXIMATOR brand – proved for the highest quality.



Basis Station consisting of :

Stainless steel protection frame on wheels, including panel mounted control and operating elements,

Air control unit, consisting of pressure gauge , shut-off valve and combined filter pressure regulator,

Air safety valve set on the required pressure,

Stainless steel tank complete type 30 litre with suction strainer,

Working pressure gauge (diameter 100 mm), liquid damped, accuracy 1.0, dual scale bar / psi,

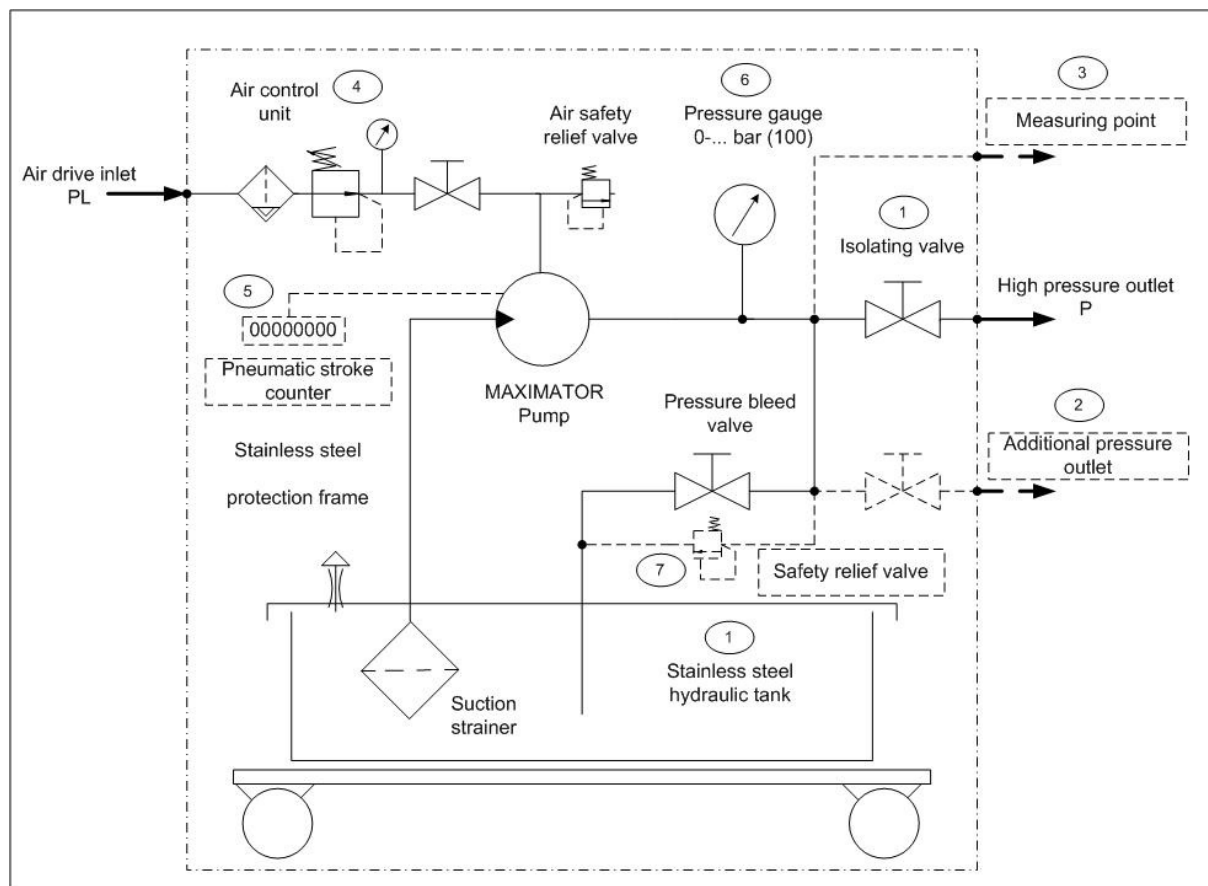
Manual pressure bleed valve,

Pressure outlet type A1,

Technical specification			
Pressure range:	0 – 5.500 bar	Height:	1.180 mm
Connection:	Depending on pump	Width:	500 mm
Weight	40 - 50 kg	Depth:	560 mm

- Available options are:
- Pressure outlet incl. isolating valve type AV1 (1)
 - Additional pressure outlet incl. isolating valve (2)
 - Measuring connection (plugged) (3)
 - Stainless steel air control unit and air drive piping (4)
 - Pneumatic remote control (Start / Stop)
 - Electric remote control (Start / Stop)
 - Pneumatic stroke counter, type 8-digit (5)
 - DKD calibration certificate for high pressure gauge (6)
 - Pressure gauge diameter \varnothing 160 mm (6)
 - Chart recorder type 0-1.000 bar with multi-programmable clock, incl. 50 charts and 1 pen,
 - Chart recorder type 0-1.600 bar with multi-programmable clock, incl. 50 charts and 1 pen,
 - Chart recorder type 0-2.500 bar with multi-programmable clock, incl. 50 charts and 1 pen,
 - High pressure safety relief valve (up to 1.000 bar) (7)
 - High pressure rupture disc (up to 4.500 bar) (7)

Functional diagram:



Remarks :

Pressure gauges for 4.000 bar and 6.000 bar are only available with diameter 160 mm

Either chart recorder or pressure gauge can be mounted in the panel

Power pack type LL can be equipped with MAXIMATOR M-series and G-series