

MAXIMATOR Power Packs Type LM

The MAXIMATOR High Pressure Test Pack type “LM” are compact pump units, suitable for oil, water and chemical service. The high-quality manufacturing as well as the high grade stainless steel components ensure highest durability and process reliability. The panel mounted instruments as well as the panel indicated process chart ensures easy operation and process control.

The pressure generating unit and all high pressure components are MAXIMATOR brand – proved for the highest quality.



Basis Station consisting of :

Stainless steel protection frame incl. panel mounted control and operating elements,

Air control unit, consisting of pressure gauge , shut-off valve and combined filter pressure regulator,

Air safety valve set on the required pressure,

Stainless steel suction line incl. filter,

Working pressure gauge (diameter 100 mm), liquid damped, accuracy 1.0, dual scale bar / psi,

Manual pressure bleed valve,

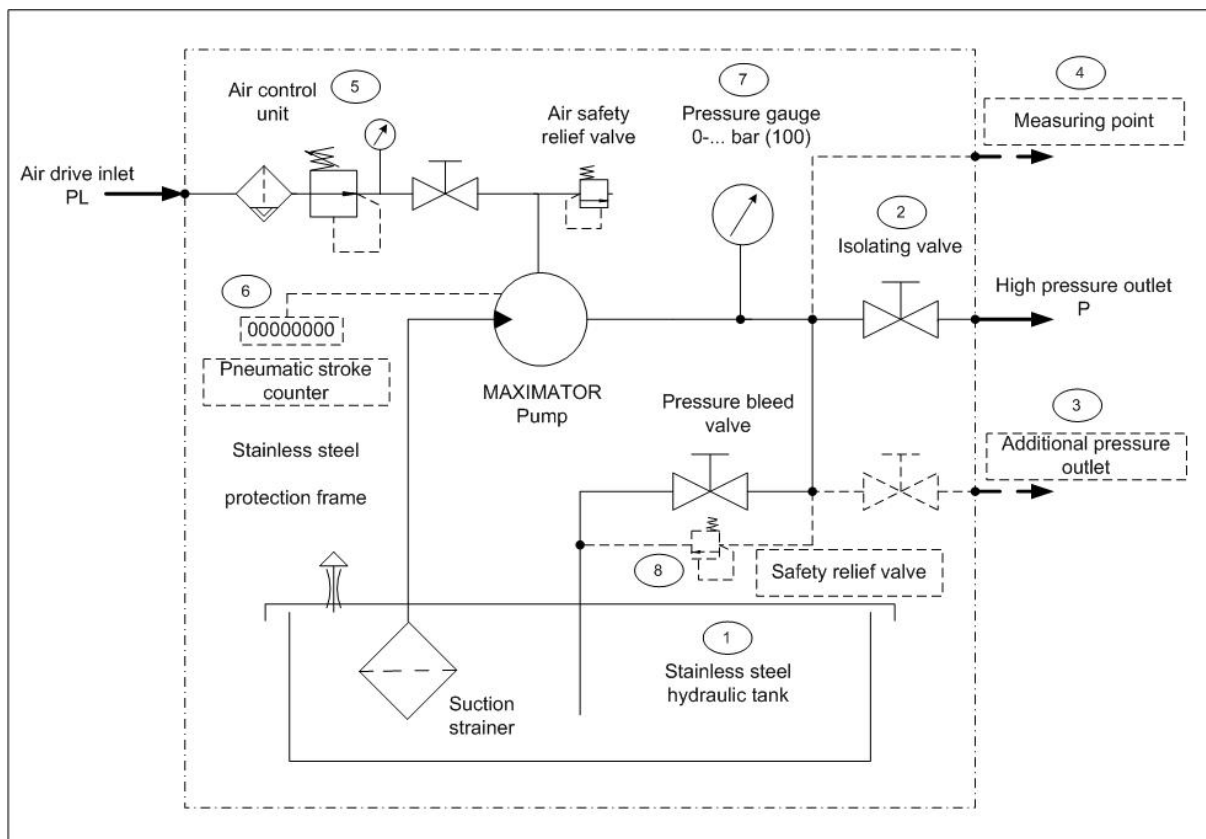
Pressure outlet type A1,



Technical specification			
Pressure range:	0 – 5.500 bar	Height:	500 mm
Connection:	Depending on pump	Width:	930 mm
Weight	25 - 50 kg	Depth:	350 mm

- Available options are:
- Stainless steel tank complete, type 6,5 litre (1)
 - Stainless steel tank complete, type 13 litre (1)
 - Pressure outlet incl. isolating valve type AV1 (2)
 - Additional pressure outlet incl. isolating valve (3)
 - Measuring connection (plugged) (4)
 - Stainless steel air control unit and air drive piping (5)
 - Pneumatic remote control (Start / Stop)
 - Electric remote control (Start / Stop)
 - Pneumatic stroke counter, type 8-digit (6)
 - DKD calibration certificate for high pressure gauge (7)
 - Pressure gauge diameter \varnothing 160 mm (7)
 - Chart recorder type 0-1.000 bar with multi-programmable clock, incl. 50 charts and 1 pen, panel mounted,
 - Chart recorder type 0-1.600 bar with multi-programmable clock, incl. 50 charts and 1 pen, panel mounted,
 - Chart recorder type 0-2.500 bar with multi-programmable clock, incl. 50 charts and 1 pen, panel mounted,
 - High pressure safety relief valve (up to 1.000 bar) (8)
 - High pressure rupture disc (up to 4.500 bar) (8)

Functional diagram:



Remarks :

Power pack type LM without tank can be equipped with the MAXIMATOR M-series, G-series and GX-series

Power pack type LM with 6,5 litre tank can be equipped with the MAXIMATOR M-series and G-series

Power pack type LS with 13 litre tank can be equipped with the MAXIMATOR M-series

Pressure gauges for 4.000 bar and 6.000 bar are only Available with diameter 160 mm